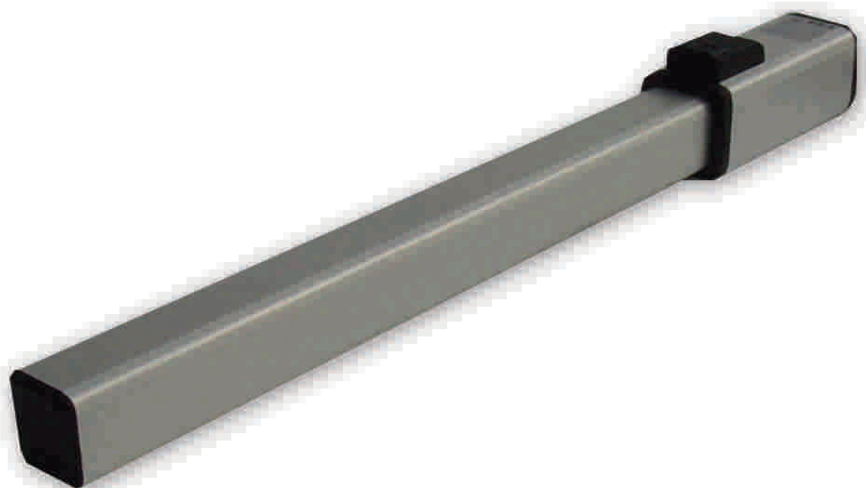


Compliant to UL 325

HALF TANK

HYDRAULIC SWING OPERATOR
FOR CONDOMINIUM USE

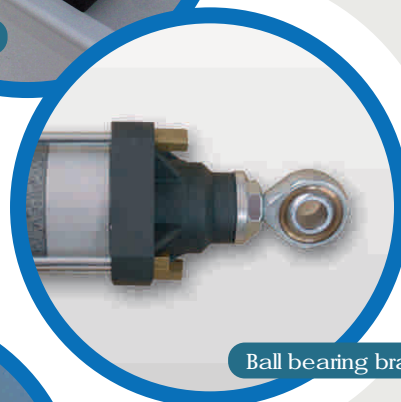


The Silence and Reliability of hydraulic operator

- Hydraulic swing operator for leaves up to 13 feet of length.
- SEA Total Quality: All parts are manufactured and tested IN-HOUSE.
- The operating by hydraulic fluid grants high and long terms performances.
- By-pass valve as an Anti-Crush safety system.
- Electronic slow-down in opening and closing.
- Electronic Reversing Sensor available on request (SAFETY GATE).
- Hydraulic Slow Down available on request.
- Mechanical Positive Stop available on request.
- Manual release with Key in case of power failure.



Manual release



Ball bearing bracket



Positive stop

Sea USA Inc.
8332 NW 30TH TERRACE
MIAMI, FL 33122
Toll free: 1.800.689.4716
Ph: 305.594.1151
fax: 305.594.7325

sales@sea-usa.com

<http://www.sea-usa.com>

HALF TANK

Specifications	Half Tank
Supply Voltage	115Vac+5% 60Hz
Motor Current	2 A
Duty cycles	60%
Operating temperature	-43°F + 131°F
Operator Weight	18 Pounds
Max leaf weight	920 Pounds
Max leaf length	13 Feet
Opening time	14 sec.
Protection class	IP67
Opening angle	115° Max

CONTROL BOARDS

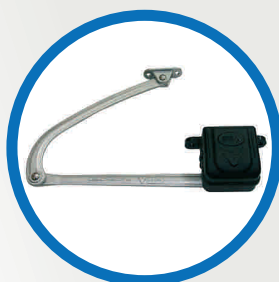
Specifications

GATE 2 (for 2 leaves)

- Management of two 230 Vac motors with or without limit switch
- Automatic logic(4 modalities), semiautomatic, step by step, dead man logics
- Slow down in opening and closing
- Motor couple regulation
- Self-learning operating time
- Self-test on photocells
- Self-diagnosis
- Encoder management (also Safety Gate for swing gates)
- Electric lock management
- Diagnostic Leds on all outputs/inputs
- Extractable connectors
- Integrated receiver compatible with radio transmitters SMART, HEAD ROLL and HEAD ECOPY series (800 users)
- Optional display
 - Alphanumeric LCD display 2 lines for 16 letters
 - It is possible to set and to modify time
 - Diagnostic functions
 - Recording of failures and last 10 events
 - Functioning logics customizing

GATE 2 Pre-wired (on request)

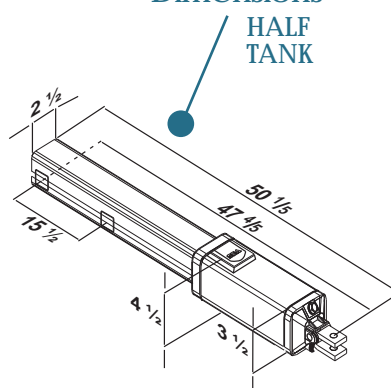
- Management of two 230 Vac motors with or without limit switch
- Automatic logic(4 modalities), semiautomatic, step by step, dead man logics
- Slow down in opening and closing
- Motor couple regulation
- Self-learning operating time
- Self-test on photocells
- Self-diagnosis
- Encoder management (also Safety Gate for swing gates)
- ON/OFF switch and 115 V receptacle
- Two loop detectors wired plus a third loop detector wired as a "shadow" (intermediate).
- Open/Hold-Open contacts provide the normally open input for phone, fireboxes or any other Open/Hold-Open devices.
- A plug outlet for any 115 VAC accessories and tools (5amp max).
- An ON/OFF switch controlling power to control panel, accessories and plug outlet.
- Wired for dual photocells safety - open and closed.
- Available in large box 16" x 14" x 6" std box 14" x 12" x 6"
- Electric lock management
- Diagnostic Leds on all outputs/inputs
- Extractable connectors
- Integrated receiver compatible with radio transmitters SMART, HEAD ROLL and HEAD ECOPY series (800 users)
- Optional display
 - Alphanumeric LCD display 2 lines for 16 letters
 - It is possible to set and to modify time
 - Diagnostic functions
 - Recording of failures and last 10 events
 - Functioning logics customizing



SAFETY GATE

SEA patented reversing system for swing gates.

Dimensions

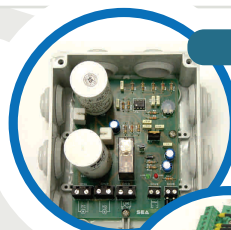


Dimensioni (Inches)

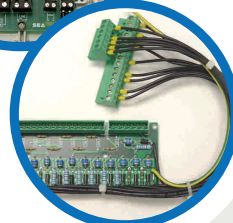
ACCESSORIES

Loop Detectors / Photocells / Key Pads / Card Readers / Transmitters & Receivers / Telephone Entry Systems / Intercom Systems

Thermo



Spike suppressor



Battery back up for all AC operators

